



# Aichi Shukutoku University

## Center for International Programs

Experience A World of Differences



# About Aichi Shukutoku University

**Foundation**

**1905**

Aichi Shukutoku  
School of Girls

**Establishment**

**1975**

Aichi Shukutoku  
University

**Comprehensive  
University**

**9** Undergraduate  
Faculties

**5** Graduate  
Schools

**Number of  
Faculty and Staff  
Members**

**900**

**Total number of  
Students**

**9,264**

as of May 1, 2019

Female

**6,817**

Male

**2,447**

Undergraduate Students

**9,181**

Graduate Students

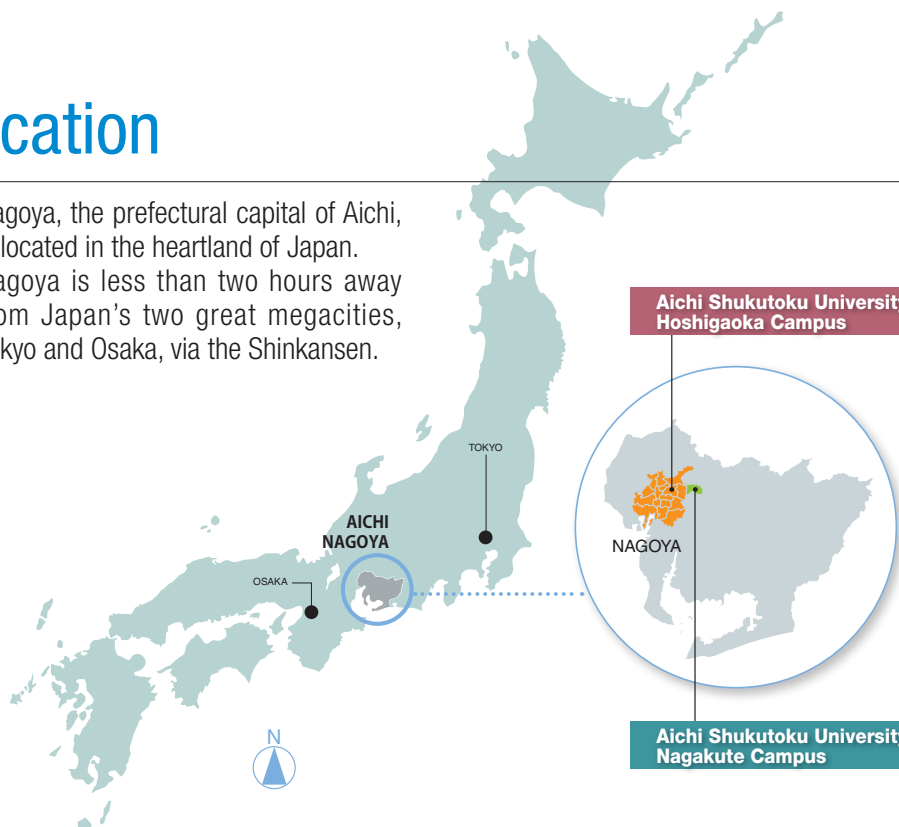
**62**

CJLC Students

**21**

## Location

Nagoya, the prefectural capital of Aichi, is located in the heartland of Japan. Nagoya is less than two hours away from Japan's two great megacities, Tokyo and Osaka, via the Shinkansen.



# Undergraduate

9 Faculties 14 Departments 11 Majors

## Faculty of Letters

Nagakute Campus

### Department of Japanese Language and Literature

Students learn Japanese literature from works in a wide range of fields, focusing on Japanese classical literature, modern and contemporary literature, national language studies, and Chinese literature

### Department of Comprehensive English

Students not only learn advanced and practical English proficiency skills, but also foster the ability to express opinions and have discussions in English to flourish in international societies.

### Department of Education

Students learn instruction methods of 9 subjects to become teachers in elementary schools and special needs schools, as well as training students as lifelong learning instructors in the aim of developing the next generation of teachers.

## Faculty of Human Informatics

Nagakute Campus

### Department of Human Informatics

Students learn the characteristics of "human", "information", and "computer" to contribute to the realization of a human-friendly society = universal design society.

## Faculty of Psychology

Nagakute Campus

### Department of Psychology

This course is built around four pillars of study, "physiology and cognitive psychology", "social psychology", "developmental psychology", and "clinical psychology" to grasp human mind from various angles.

## Faculty of Creation and Representation

Nagakute Campus

### Department of Creation and Representation

#### Major of Literary Arts

Students learn "expression" from both sensitivity and theory, and acquire creativity, descriptive power, and originality.

#### Major of Media Theories and Production

Student will pursue theories, research methodology, production of Media studies and creation which is indispensable to play an active role in the media industry and highly communication in modern society.

#### Major of Architecture and Interior Design

You will be combining history, culture, environment, technology, theory and design, and your own creativity and spatial insight play a major role in this. Your education will be technical and scientific and you will learn how to analyse complex issues in a clear and structured way.

## Faculty of Health and Medical Sciences

Nagakute Campus

### Department of Medical Sciences

#### Major of Communication Disorders and Sciences

The goal is to acquire a qualification of a speech language hearing therapist and develop expertise and scientific thinking skills to study communication disability studies, medicine, psychology, linguistics.

### Department of Medical Sciences

#### Major of Vision Sciences

Students acquire a lot of knowledge and excellent skills in order to pass the national examination of a certified orthoptist.

### Department of Sports and Health Sciences

Students comprehensively learn six academic fields: basic medicine, clinical medicine, physical education, sports science, mental health, and nutrition.

### Department of Health and Nutritional Sciences

Students study practical skills and specialized knowledge on nutrition and food, which will allow them to work as registered dietitians at a wide range of workplaces, including hospitals and welfare facilities.

## Faculty of Human Services

Nagakute Campus

### Department of Social Services

#### Major of Social Services

Students aim to become certified social workers and psychiatric social workers, and develop human resources who can acquire social welfare expertise and create human happiness.

#### Major of Child and Education

Students develop a welfare perspective that overlooks wider society as a whole in addition to childcare and early childhood education expertise.

## Faculty of Global Culture and Communication

Hoshigaoka Campus

### Department of Global Culture and Communication

#### Major of Language Studies

This is composed of four programs which are English, Chinese, Korea and Japanese language Education. Students deepen understanding of different cultures and develop practical skills of language literacy.

#### Major of Multicultural and Tourism Studies

This is divided into international exchange course which learns about regional and international society and sightseeing course which deepens understanding of tourism management, hospitality, and town development.

## Faculty of Business

Hoshigaoka Campus

### Department of Business

#### Major of Modern Business

Two courses have been prepared from the second semester of the first year – "Business Innovation" and "Business Accounting and students develop practical skills and knowledge in each field of business.

#### Major of Global Business

Students learn the necessary expertise in bilingual Japanese and English in the field of global business, and experience practical learning through internships at companies in Japan and abroad.

## Faculty of Global Communication

Hoshigaoka Campus

### Department of Global Communication

Students study with people from all over the world and learn to use English through three lines of study – "Human Communication," "Japanology," and "Global Awareness" – in an "All English" learning environment including a mandatory study abroad program.

# Graduate

5 Departments 2 Courses 21 Majors

## Graduate School of Creativity and Culture

### Department of Creativity and Culture

Major in Japanese Language and Literature  
Major in Library and Information Science  
Major in Information Design and Systems  
Major in Literary Arts  
Major in Media Theories and Production  
Major in Architecture and Interior Design

## Graduate School of Education

### Department of Developmental Education

Major in Education  
Major in Child Development

## Graduate School of Psychology and Medical Sciences

### Department of Psychology and Medical Sciences

Major in Psychology  
Major in Clinical Psychology  
Major in Social Services  
Major in Communication Disorders and Sciences  
Major in Vision Science  
Major in Sports and Health Sciences

## Graduate School of Global Culture and Communication

### Department of Global Culture and Communication

#### Course in Language and Culture

Major in Japanese Language and Education  
Major in Comprehensive English  
Major in East Asian Language and Culture

#### Course in Multicultural Studies

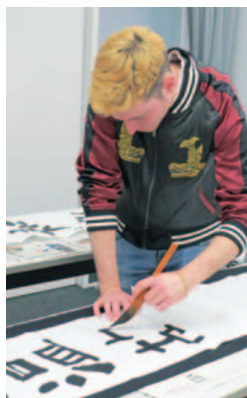
Major in Multicultural Studies and Tourism  
Major in Global Studies

## Graduate School of Business

### Department of Business

Major in Accounting  
Major in Management and Economy

# Exchange Programs



## Japanese Studies Program



▶ Go To <https://www.aasa.ac.jp/institution/international/en/program/cjlc/>

### Program Outline

The Aichi Shukutoku University Center for Japanese Language and Culture offers Japanese language courses that match the individual level of each student, and courses in Japanese culture that place an emphasis on practical experience. Undergraduate courses are incorporated into the curriculum to give our students opportunities to study and learn with Japanese students.

There are six levels of instruction, from “Basic Japanese I” to “Advanced Japanese II.” The courses offered are aimed to develop all four skills at the level appropriate for each student.

The goal is to provide tools to communicate in the real world effectively.

### Application Requirement

Exchange students must have grades at least 75 points on a 100 point scale, or a 2.75 GPA on a 4.00 scale at their home universities.

### Requirements for Completion

The period of study at the Center for Japanese Language and Culture is one year. However, those who fulfill certain conditions will be permitted to extend their period of study for up to one additional year. Students receive a certificate of completion upon successfully fulfilling the requirements below.

- Completing two semesters of study
- Earning a minimum of 28 credits with at least 14 credits earned each semester



## Academic Calendar

Schedule	Spring	Fall
Dormitory Check-in	Late March	Early September
Orientation Course Registration	Early April	Mid September
Semester Begins	Mid April	Late September
Semester Ends	Late July	Late January
Final Examination	Early August	Late January
Vacation	Early August – Late September	Late December – Early January Late January – Early April

※ For more information, check here.





## Non-Degree Undergraduate Course Registration



▶ Go To <https://www.aasa.ac.jp/institution/international/en/program/course/>

### English Taught Courses

#### Courses Offered

The student will be enrolled in Faculty of Global Communication (Hoshigaoka Campus). The course list taught in English is available at:

<https://www.aasa.ac.jp/institution/international/en/program/course/english.html>

Exchange students must register and earn at least 14 credits per semester at ASU.

#### Application Requirements

##### Language requirement

Not required, but suggested for non-native English speakers to have TOEFL iBT 71/ IELTS 5.5 (CEFR B2 level) or equivalent.

##### Academic requirement

Failing grade (F) must be less than 10% at their home universities.

#### Japanese Language Class

Students are recommended to take “Introductory Japanese I & II” during their first semester at ASU.

### Japanese Taught Courses

#### Courses Offered

The student can choose courses across all faculties and departments. To find courses, go to the ASU syllabus search website at:

<http://pnavi.aasa.ac.jp/syllabus/search/search.php>

Exchange students must register and earn at least 14 credits per semester at ASU.

#### Application Requirements

##### Language requirement

Japanese Language Proficiency Test (JLPT) N1.

##### Academic requirement

Failing grade (F) must be less than 10% at their home universities.

#### Japanese Language Class

Students are recommended to take “Japanese Academic Writing for non-native speakers.”

# Accommodation

## iHouse (International House)



▶ Go To <https://www.aasa.ac.jp/institution/ihouse/en/>

iHouse was built on Nagakute campus in 2013. Its second and third floors are the dormitory for international students. A live-in dormitory manager is on duty for 24 hours, and its entrance is separated from the rest of the facilities completely for security by a door which can be opened only with the resident's ID card. All rooms are single.



### Basic Room Facilities

Single bed frame and mattress, desk and chair, desk lamp, refrigerator, air conditioner, closet, curtains, internet (Ethernet connection)



### Common Facilities

Kitchen, living and dining room, study room, mini lounges, shower rooms, toilets, laundry room, vending machine



## RA (Resident Assistant)

RAs are live-in students at iHouse to support a positive on-campus living experience for the international students. They provide a practical advice for students who need help dealing with social, medical, and personal problems. They assist international students in their adjustment to a new environment and community. They also host various events to interact with international students living in iHouse.

# Partner Institutions

Aichi Shukutoku University has international exchange agreements with partner universities in 23 countries and regions.



## USA

- Mississippi University for Women
- West Virginia University
- Southern New Hampshire University
- The University of Tennessee at Martin
- University of North Carolina Wilmington
- California State University San Marcos
- Ferris State University
- Arkansas State University
- The University of Mississippi



## Canada

- Medicine Hat College
- University of the Fraser Valley



## Mexico

- Universidad Internacional



## UK

- Oxford Brookes University
- Birmingham City University
- York St John University



## Ireland

- National University of Ireland, Galway



## Belgium

- IHECS
- VIVES University of Applied Sciences



## France

- EDH (EFAP School of Communication)



## Germany

- University of Hamburg
- Stuttgart Media University
- Baden-Wuerttemberg Cooperative State University (DHBW)
- University of Vechta
- Neu-Ulm University of Applied Sciences



## Austria

- University of Graz
- FH Wien der WKW University of Applied Sciences for Management & Communication



## Hungary

- University of Dunaújváros



## Latvia

- Ventspils University College



## Poland

- State Higher Vocational School in Tarnow
- Wsztechnica Polska University in Warsaw



## Czech

- Palacký University Olomouc
- University of Ostrava



## Italia

- University of Siena



## Spain

- The University of Córdoba
- University of Málaga
- The University of Jaén



## Denmark

- Zealand Institute of Business and Technology (ZIBAT)



## Sweden

- Stockholm University



## Finland

- Metropolia University of Applied Sciences



## China

- Nanjing Normal University
- Beijing Normal University
- Tianjin Foreign Studies University
- Beijing Language and Culture University



## Taiwan

- Wenzao Ursuline University of Languages
- Providence University
- Tainan University of Technology



## Republic of Korea

- Chung-Ang University
- Ewha Womans University
- Kookmin University
- Dong-A University
- Mokpo National University
- Daegu Catholic University



## Hong Kong

- The Hang Seng University of Hong Kong



## Australia

- CQ University
- University of Canberra
- Western Sydney University

As of December 1, 2019

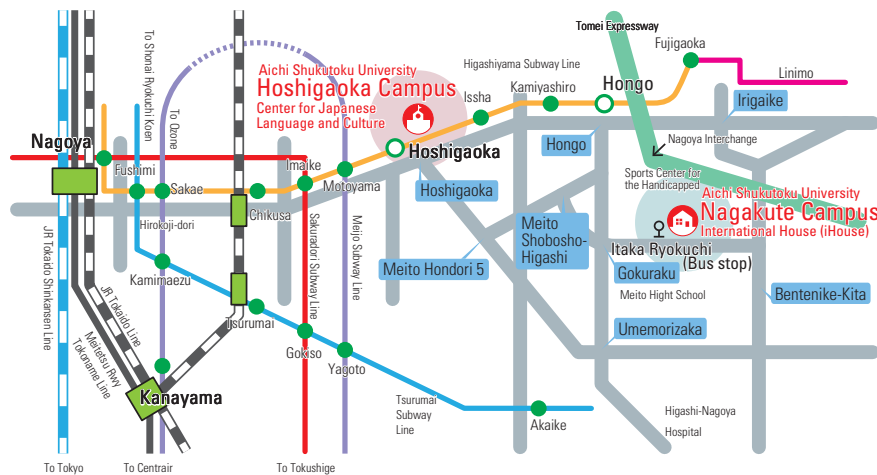
## Buddy Program

Exchange students are supported by their fellow buddies. International students and these volunteer students can help each other in your respective native language and share many amazing experiences together. ASU students will make you feel at home.



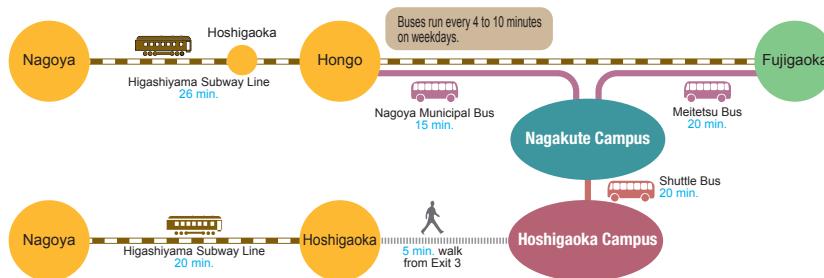
# Access to Aichi Shukutoku University

Aichi Shukutoku University has two campuses: the Nagakute Campus and the Hoshigaoka Campus. Students can use the shuttle bus between the campuses free of charge.



**HOSHIGAOKA Campus**  
 23, Sakuragaoka, Chikusa-ku, Nagoya, Aichi 464-8671, JAPAN  
 TEL: +81-(0)52-781-1151

**NAGAKUTE Campus**  
 9, Katahira 2-chome, Nagakute, Aichi 480-1197, JAPAN  
 TEL: +81-(0)561-62-4111



## HOSHIGAOKA Campus

20 minutes from Nagoya Station to Hoshigaoka Station on the Higashiyama Subway Line. A 3-minute walk from the No. 3 exit.

## NAGAKUTE Campus International House (iHouse)

26 minutes from Nagoya Station to Hongo Station on the Higashiyama Subway Line. Take a city bus from Hongo Station to Itaka Ryokuchi which is the last stop. Itaka Ryokuchi Stop is right in front of ASU. It takes about 15 minutes.

## Aichi Shukutoku University Center for International Programs

23 Sakuragaoka, Chikusa-ku, Nagoya, Aichi 464-8671 JAPAN

TEL: +81-(0)52-783-1590

FAX: +81-(0)52-783-1578

E-mail: [goglobal@asu.aasa.ac.jp](mailto:goglobal@asu.aasa.ac.jp)

<https://www.aasa.ac.jp/institution/international/>

