



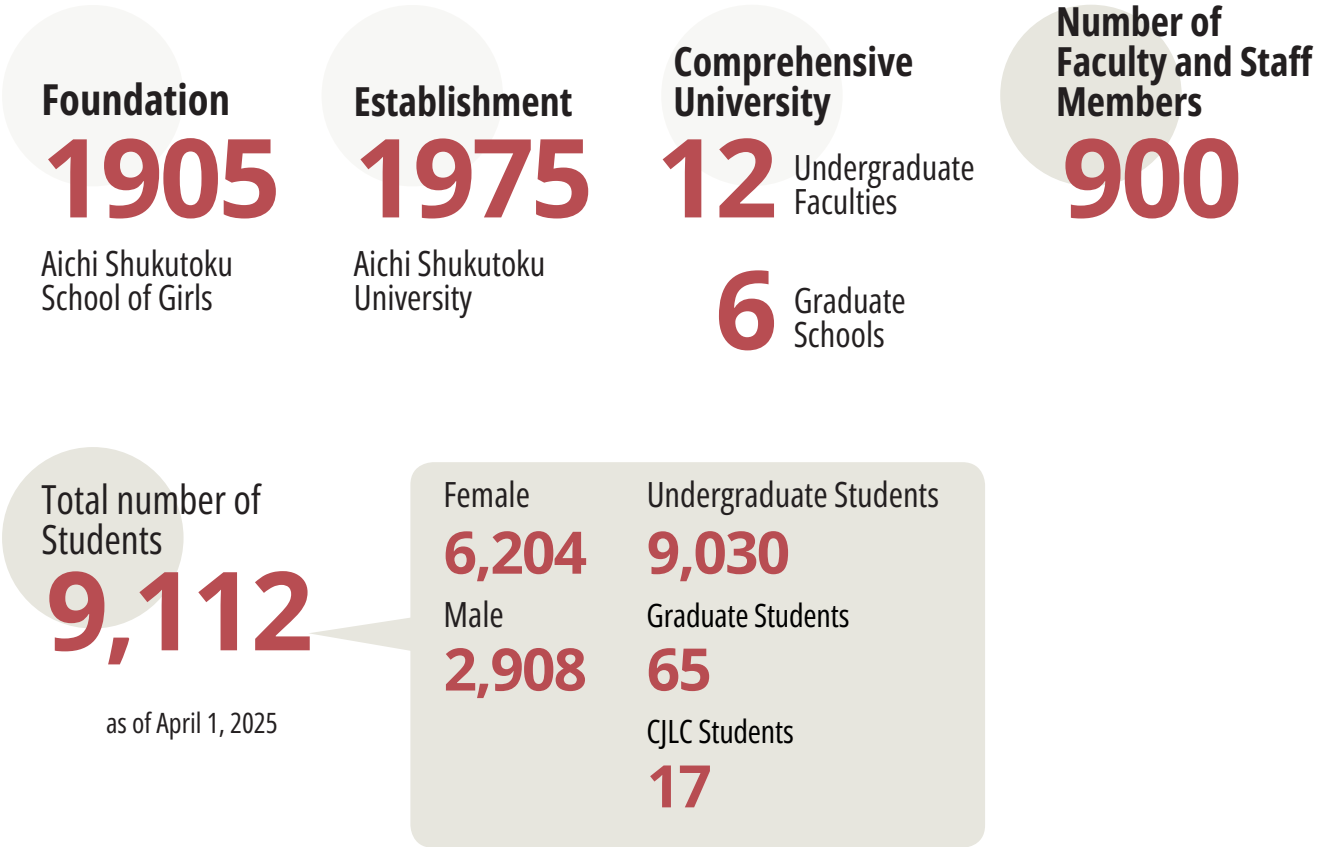
# Aichi Shukutoku University

Center for International Programs

Embracing Diversity

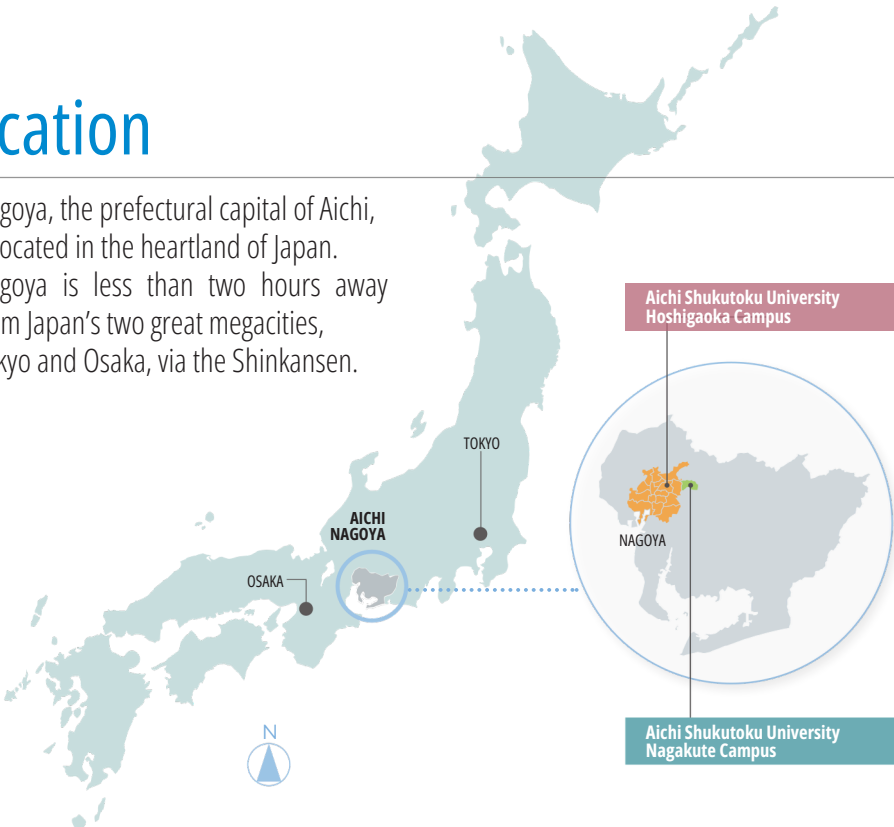


# About Aichi Shukutoku University



## Location

Nagoya, the prefectural capital of Aichi, is located in the heartland of Japan. Nagoya is less than two hours away from Japan's two great megacities, Tokyo and Osaka, via the Shinkansen.



# Undergraduate

12 Faculties 14 Departments

## Nagakue Campus

### Faculty of Letters

#### Department of Japanese Language and Literature

Students learn Japanese literature from works in a wide range of fields, focusing on Japanese classical literature, modern and contemporary literature, national language studies, and Chinese literature.

### Faculty of Education

#### Department of Education

Students can select from distinctive groups of subjects to become educators with specific strengths.

### Faculty of Human Informatics

#### Department of Human Informatics

#### Major of Kansei Engineering

Create designs and objects that respect and celebrate human beings.

#### Major of Data Science

Leverage data to understand everything from business trends to the human mind.

#### Major of Education in Mathematics and Informatics

### Faculty of Psychology

#### Department of Psychology

Study the four main domains of psychology, "physiological and cognitive psychology," "social psychology," "developmental psychology," and "clinical psychology," in a comprehensive manner in what is a multi-faceted exploration of the "human heart and mind."

### Faculty of Creation and Representation

#### Department of Creation and Representation

#### Major of Literary Arts

Students learn "expression" from both sensitivity and theory, and acquire creativity, descriptive power, and originality.

#### Major of Media Theories and Production

Student will pursue theories, research methodology, production of Media studies and creation which is indispensable to play an active role in the media industry and highly communication in modern society.

### Faculty of Architecture

#### Department of Architecture

#### Major of Architecture and Urban Development

Students gain comprehensive knowledge in architectural design, history, planning, and construction, focusing on urban development and community revitalization through practical experience.

#### Major of Residential Architecture and Interior Design

Students learn to design functional and comfortable living spaces, incorporating the latest technologies and trends, and gain practical skills through industry-academia collaboration.

### Faculty of Health and Medical Sciences

#### Department of Medical Sciences

#### Major of Communication Disorders

Acquire a qualification of a speech language hearing therapist and develop expertise and scientific thinking skills to study communication disability studies, medicine, psychology, linguistics.

#### Major of Vision Sciences

Acquire a lot of knowledge and excellent skills to pass the national examination of a certified orthoptist.

#### Major of Physical Therapy

Learn rehabilitation skills for all age groups, preparing to work in diverse healthcare settings.

#### Major of Medical Laboratory Sciences

Expertise in medical testing and diagnostics, preparing for careers in healthcare institutions.

#### Department of Sports and Health Sciences,

#### Major of Sports and Health Sciences

Learn physical and mental health through diverse disciplines, gaining rich education and practical skills to become versatile generalists in sports and health sciences, ready for various societal roles.

#### Major of Emergency Medical Sciences

Gain practical skills through role play and field training, becoming empathetic and knowledgeable emergency life-saving technicians, taught by qualified professionals to provide the best care.

### Faculty of Food and Health Sciences

#### Department of Health and Nutritional Sciences

Students learn to become registered dietitians, focusing on disease prevention, health maintenance, and collaborative healthcare.

#### Department of Innovative Food Sciences

Students explore food industry innovation, studying ingredient analysis, marketing research, and gastronomic features like taste and nutrition.

# Graduate School

### Creativity and Culture

#### Department of Creativity and Culture

Major in Japanese Language and Literature  
Major in Library and Information Science  
Major in Information Design and Systems  
Major in Library Arts  
Major in Media Theories and Production

### Education

#### Department of Developmental Education

Major in Education  
Major in Child Development

### Psychology and Medical Science

#### Department of Psychology and Medical Sciences

Major in Psychology  
Major in Clinical Psychology  
Major in Social Services  
Major in Communication Disorders and Sciences  
Major in Visual Sciences  
Major in Sports and Health Sciences

### Faculty of Human Services

#### Department of Human Services

#### Major of Social Services

Students aim to become certified social workers and psychiatric social workers and develop human resources who can acquire social welfare expertise and create human happiness.

#### Major of Child Care and Education

Students develop a welfare perspective that overlooks wider society in addition to childcare and early childhood education expertise.

## Hoshigaoka Campus

### Faculty of Global Culture and Communication

#### Department of Global Culture and Communication

#### Major of Language Studies

This is composed of four programs which are English, Chinese, Korea and Japanese language Education. Students deepen understanding of different cultures and develop practical skills of language literacy.

#### Major of Multicultural and Tourism Studies

This is divided into international exchange course which learns about regional and international society and sightseeing course which deepens understanding of tourism management, hospitality, and town development.

### Faculty of Business

#### Department of Business

#### Major of Modern Business

#### Major of Global Business

Students get what they need to succeed with a deep understanding of four core areas of business.

### Faculty of Global Communication

#### Department of Global Communication

Students study with people from all over the world and learn to use English through three lines of study - "Human Communication," "Japanology," and "Global Awareness" - in an "All English" learning environment including a mandatory study abroad program.

## 6 schools

### Health and Nutritional Sciences

#### Department of Health and Nutritional Sciences

### Global Culture and Communication

#### Department of Global Culture and Communication

Course in Language and Culture  
Course in Multicultural Studies and Tourism

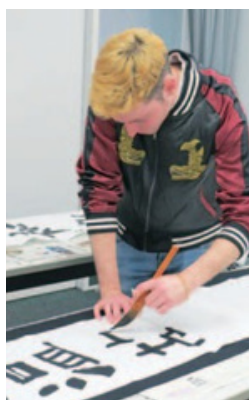
### Business

#### Department of Business

Major in Accounting  
Major in Management and Economy



# Exchange Programs



## Japanese Studies Program

▶ Go To <https://www.aasa.ac.jp/institution/international/en/program/cjlc/>



### Program Outline

The Aichi Shukutoku University Center for Japanese Language and Culture offers Japanese language courses that match the individual level of each student, and courses in Japanese culture that place an emphasis on practical experience. Undergraduate courses are incorporated into the curriculum to give our students opportunities to study and learn with Japanese students.

There are six levels of instruction, from "Basic Japanese I" to "Advanced Japanese II." The courses offered are aimed to develop all four skills at the level appropriate for each student. The goal is to provide tools to communicate in the real world effectively.

### Application Requirement

Exchange students must have grades at least 75 points on a 100 point scale, or a 2.75 GPA on a 4.00 scale at their home universities.

### Requirements for Completion

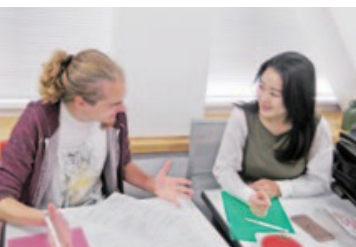
The period of study at the Center for Japanese Language and Culture is one year. However, those who fulfill certain conditions will be permitted to extend their period of study for up to one additional year. Students receive a certificate of completion upon successfully fulfilling the requirements below.

- Completing two semesters of study
- Earning a minimum of 28 credits with at least 14 credits earned each semester



## Academic Calendar

Schedule	Spring	Fall
Dormitory Check-in	Late March	Early September
Orientation Course	Early April	Mid September
Registration Semester Begins	Mid April	Late September
Semester Ends Final	Late July	Late January
Examination	Early August	Late January
Vacation	Early August - Late September	Late December - Early January Late January - Early April



## Non-Degree Undergraduate Course Registration



▶ Go To <https://www.aasa.ac.jp/institution/international/en/program/course/>

### English Taught Courses

#### Courses Offered

The student will be enrolled in Faculty of Global Communication (Hoshigaoka Campus). The course list taught in English is available at:

<https://www.aasa.ac.jp/institution/international/en/program/course/english.html>

Exchange students must register and earn at least 14 credits per semester at ASU.

#### Application Requirements

##### Language requirement

Not required, but suggested for non-native English speakers to have TOEFL iBT 71/ IELTS 5.5 (CEFR B2 level) or equivalent.

##### Academic requirement

Failing grade (F) must be less than 10% at their home universities.

#### Japanese Language Class

Students are recommended to take "Introductory Japanese I & II" during their first semester at ASU.

### Japanese Taught Courses

#### Courses Offered

The student can choose courses across all faculties and departments. To find courses, go to the ASU syllabus search website at: <http://pnavi.aasa.ac.jp/syllabus/search/search.php> Exchange students must register and earn at least 14 credits per semester at ASU.

#### Application Requirements

##### Language requirement

Japanese Language Proficiency Test (JLPT) N1.

##### Academic requirement

Failing grade (F) must be less than 10% at their home universities.

#### Japanese Language Class

Students are recommended to take "Japanese Academic Writing for non-native speakers."

# Accommodation



## iHouse

▶ Go To <https://www.aasa.ac.jp/institution/ihouse/en/>



**iHouse (International House)** is a dormitory on the Nagakute Campus in Aichi Shukutoku University. On the 1st floor, there are classrooms, tatami rooms, and a kitchen. Dormitory rooms for international students are on the 2nd and 3rd floors. There is a live-in dormitory manager. Japanese Resident Assistants also live in this iHouse to provide support to international students.

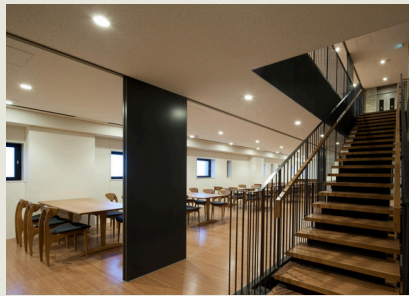
### Common Facilities

Kitchen, living and dining room, study room, mini lounges, shower rooms, toilets, laundry room, vending machine

### Basic Room Facilities

Single bed frame and mattress, desk and chair, desk lamp, refrigerator, air conditioner, closet, curtains, internet (Ethernet connection)

Security Deposit	When moving in ¥40,000
Room charge/ month	¥20,000
Maintenance Fee/month	¥5,000
Cleaning Charge	When moving out ¥5,000
Electricity Charge	Actual cost



Living/Dining Room



Study Room



Kitchen



### RA (Resident Assistant)

RAs are live-in students at iHouse to support a positive on-campus living experience for the international students. They provide a practical advice for students who need help dealing with social, medical, and personal problems. They assist international students in their adjustment to a new environment and community. They also host various events to interact with international students living in iHouse.



# Partner Institutions

Aichi Shukutoku University has international exchange agreements with partner universities in 23 countries and regions.



**USA**

- California State University San Marcos
- Ferris State University
- Mississippi University for Women
- Southern New Hampshire University
- The University of Mississippi
- The University of Tennessee at Martin
- University of North Carolina Wilmington

**UK**

- Oxford Brookes University
- York St John University

**Ireland**

- National University of Ireland, Galway

**Belgium**

- IHECS
- VIVES University of Applied Sciences

**France**

- EFAP School of Communication
- Institut Catholique de Paris

**Germany**

- Baden-Wuerttemberg Cooperative State University (DHBW)
- Stuttgart Media University
- The Neu-Ulm University of Applied Sciences
- University of Hamburg
- University of Vechta

**Austria**

- FHWien der WKW University of Applied Sciences for Management & Communication
- University of Graz

**Slovenija**

- University of Ljubljana

**Czech**

- Palacký University Olomouc
- University of Ostrava

**Italia**

- University of Siena

**Spain**

- The University of Córdoba
- University of Jaén
- The University of Málaga

**Denmark**

- Zealand Institute of Business and Technology (ZIBAT)

**Sweden**

- Stockholm University

**Finland**

- Metropolia University of Applied Sciences

**China**

- Beijing Language and Culture University
- Beijing Normal University
- Guilin University of Technology
- Nanjing Normal University
- Tianjin Foreign Studies University

**Taiwan**

- Providence University
- Shu-Zen junior College of Medicine and Management
- Tainan University of Technology
- Wenzao Ursuline University of Languages

**Republic of Korea**

- Chung-Ang University
- Daegu Catholic University
- Dong-A University
- Ewha Womans University
- Kookmin University
- Mokpo National University
- Sookmyung Women's University
- Soongsil University
- Kyonggi University

**Hong Kong**

- The Hang Seng University of Hong Kong

**Indonesia**

- Maranatha Christian University
- University of Indonesia

**Australia**

- University of Canberra
- Western Sydney University

As of April, 2025

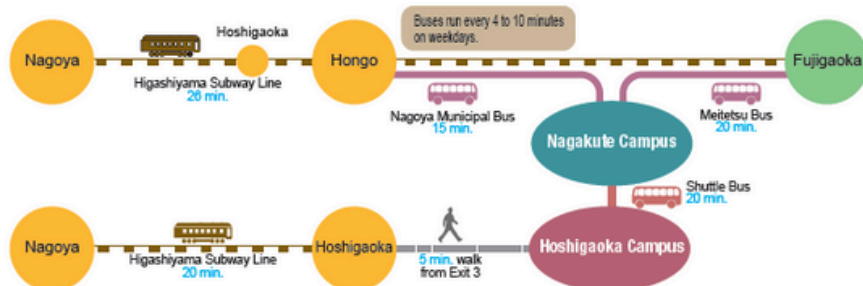
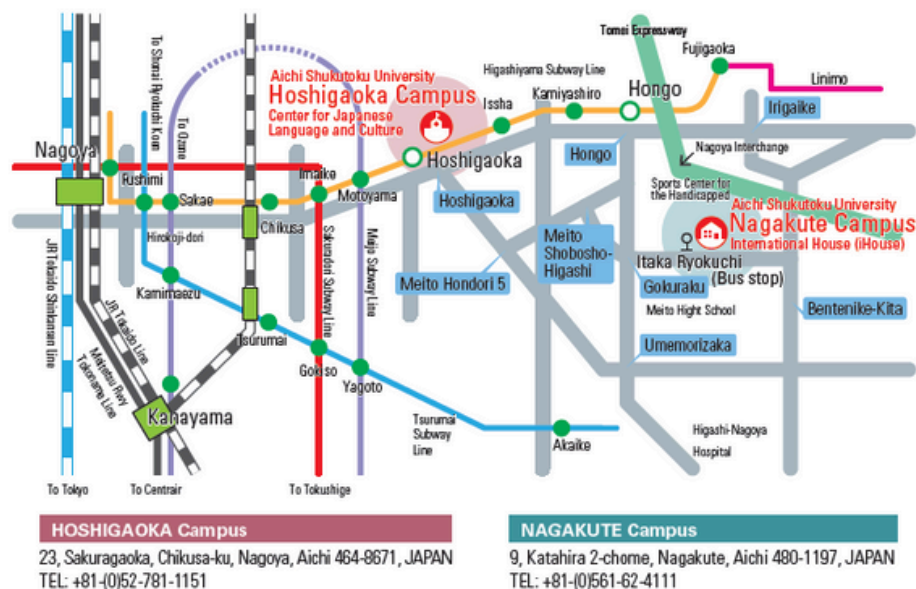
## Buddy Program

Exchange students are supported by their fellow buddies. International students and these volunteer students can help each other in your respective native language and share many amazing experiences together. ASU students will make you feel at home.



## Access to Aichi Shukutoku University

Aichi Shukutoku University has two campuses: the Nagakute Campus and the Hoshigaoka Campus. Students can use the shuttle bus between the campuses free of charge.



### HOSHIGAOKA Campus

20 minutes from Nagoya Station to Hoshigaoka Station on the Higashiyama Subway Line. A 3-minute walk from the No. 3 exit.

### NAGAKUTE Campus International House (iHouse)

26 minutes from Nagoya Station to Hongo Station on the Higashiyama Subway Line. Take a city bus from Hongo Station to Itaka Ryokuchi which is the last stop. Itaka Ryokuchi Stop is right in front of ASU. It takes about 15 minutes.

Aichi Shukutoku University  
Center for International Programs

23 Sakuragaoka, Chikusa-ku, Nagoya, Aichi 464-8671 JAPAN

TEL: +81-(0)52-783-1590 FAX: +81-(0)52-783-1578

E-mail: [goglobal@asu.aasa.ac.jp](mailto:goglobal@asu.aasa.ac.jp)

<https://www.aasa.ac.jp/institution/international/>

