



Aichi Shukutoku University

Center for International Programs

Experience A World of Differences



About Aichi Shukutoku University

Foundation

1905

Aichi Shukutoku
School of Girls

Establishment

1975

Aichi Shukutoku
University

**Comprehensive
University**

9 Undergraduate
Faculties

5 Graduate
Schools

**Number of
Faculty and Staff
Members**

900

**Total number of
Students**

9,264

as of May 1, 2019

Female

6,817

Male

2,447

Undergraduate Students

9,181

Graduate Students

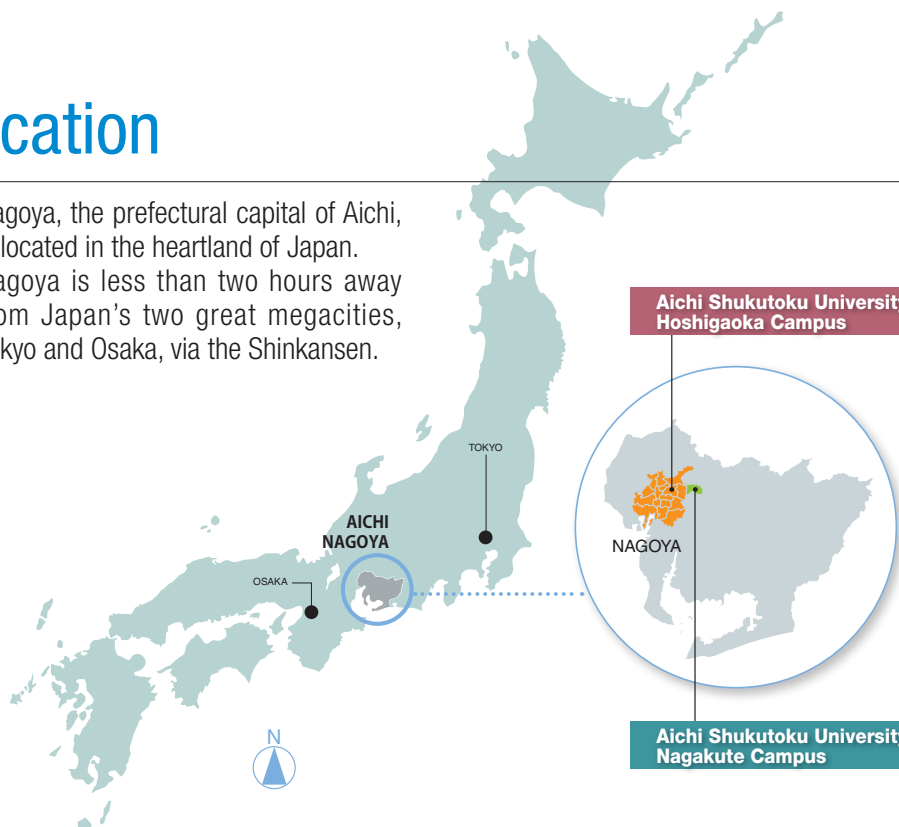
62

CJLC Students

21

Location

Nagoya, the prefectural capital of Aichi, is located in the heartland of Japan. Nagoya is less than two hours away from Japan's two great megacities, Tokyo and Osaka, via the Shinkansen.



Undergraduate

9 Faculties 14 Departments 11 Majors

Faculty of Letters

Nagakute Campus

Department of Japanese Language and Literature

Students learn Japanese literature from works in a wide range of fields, focusing on Japanese classical literature, modern and contemporary literature, national language studies, and Chinese literature

Department of Comprehensive English

Students not only learn advanced and practical English proficiency skills, but also foster the ability to express opinions and have discussions in English to flourish in international societies.

Department of Education

Students learn instruction methods of 9 subjects to become teachers in elementary schools and special needs schools, as well as training students as lifelong learning instructors in the aim of developing the next generation of teachers.

Faculty of Human Informatics

Nagakute Campus

Department of Human Informatics

Students learn the characteristics of "human", "information", and "computer" to contribute to the realization of a human-friendly society = universal design society.

Faculty of Psychology

Nagakute Campus

Department of Psychology

This course is built around four pillars of study, "physiology and cognitive psychology", "social psychology", "developmental psychology", and "clinical psychology" to grasp human mind from various angles.

Faculty of Creation and Representation

Nagakute Campus

Department of Creation and Representation

Major of Literary Arts

Students learn "expression" from both sensitivity and theory, and acquire creativity, descriptive power, and originality.

Major of Media Theories and Production

Student will pursue theories, research methodology, production of Media studies and creation which is indispensable to play an active role in the media industry and highly communication in modern society.

Major of Architecture and Interior Design

You will be combining history, culture, environment, technology, theory and design, and your own creativity and spatial insight play a major role in this. Your education will be technical and scientific and you will learn how to analyse complex issues in a clear and structured way.

Faculty of Health and Medical Sciences

Nagakute Campus

Department of Medical Sciences

Major of Communication Disorders and Sciences

The goal is to acquire a qualification of a speech language hearing therapist and develop expertise and scientific thinking skills to study communication disability studies, medicine, psychology, linguistics.

Department of Medical Sciences

Major of Vision Sciences

Students acquire a lot of knowledge and excellent skills in order to pass the national examination of a certified orthoptist.

Department of Sports and Health Sciences

Students comprehensively learn six academic fields: basic medicine, clinical medicine, physical education, sports science, mental health, and nutrition.

Department of Health and Nutritional Sciences

Students study practical skills and specialized knowledge on nutrition and food, which will allow them to work as registered dietitians at a wide range of workplaces, including hospitals and welfare facilities.

Faculty of Human Services

Nagakute Campus

Department of Social Services

Major of Social Services

Students aim to become certified social workers and psychiatric social workers, and develop human resources who can acquire social welfare expertise and create human happiness.

Major of Child and Education

Students develop a welfare perspective that overlooks wider society as a whole in addition to childcare and early childhood education expertise.

Faculty of Global Culture and Communication

Hoshigaoka Campus

Department of Global Culture and Communication

Major of Language Studies

This is composed of four programs which are English, Chinese, Korea and Japanese language Education. Students deepen understanding of different cultures and develop practical skills of language literacy.

Major of Multicultural and Tourism Studies

This is divided into international exchange course which learns about regional and international society and sightseeing course which deepens understanding of tourism management, hospitality, and town development.

Faculty of Business

Hoshigaoka Campus

Department of Business

Major of Modern Business

Two courses have been prepared from the second semester of the first year – "Business Innovation" and "Business Accounting and students develop practical skills and knowledge in each field of business.

Major of Global Business

Students learn the necessary expertise in bilingual Japanese and English in the field of global business, and experience practical learning through internships at companies in Japan and abroad.

Faculty of Global Communication

Hoshigaoka Campus

Department of Global Communication

Students study with people from all over the world and learn to use English through three lines of study – "Human Communication," "Japanology," and "Global Awareness" – in an "All English" learning environment including a mandatory study abroad program.

Graduate

5 Departments 2 Courses 21 Majors

Graduate School of Creativity and Culture

Department of Creativity and Culture

Major in Japanese Language and Literature
Major in Library and Information Science
Major in Information Design and Systems
Major in Literary Arts
Major in Media Theories and Production
Major in Architecture and Interior Design

Graduate School of Education

Department of Developmental Education

Major in Education
Major in Child Development

Graduate School of Psychology and Medical Sciences

Department of Psychology and Medical Sciences

Major in Psychology
Major in Clinical Psychology
Major in Social Services
Major in Communication Disorders and Sciences
Major in Vision Science
Major in Sports and Health Sciences

Graduate School of Global Culture and Communication

Department of Global Culture and Communication

Course in Language and Culture

Major in Japanese Language and Education
Major in Comprehensive English
Major in East Asian Language and Culture

Course in Multicultural Studies

Major in Multicultural Studies and Tourism
Major in Global Studies

Graduate School of Business

Department of Business

Major in Accounting
Major in Management and Economy

Exchange Programs



Japanese Studies Program



▶ Go To <https://www.aasa.ac.jp/institution/international/en/program/cjlc/>

Program Outline

The Aichi Shukutoku University Center for Japanese Language and Culture offers Japanese language courses that match the individual level of each student, and courses in Japanese culture that place an emphasis on practical experience. Undergraduate courses are incorporated into the curriculum to give our students opportunities to study and learn with Japanese students.

There are six levels of instruction, from “Basic Japanese I” to “Advanced Japanese II.” The courses offered are aimed to develop all four skills at the level appropriate for each student.

The goal is to provide tools to communicate in the real world effectively.

Application Requirement

Exchange students must have grades at least 75 points on a 100 point scale, or a 2.75 GPA on a 4.00 scale at their home universities.

Requirements for Completion

The period of study at the Center for Japanese Language and Culture is one year. However, those who fulfill certain conditions will be permitted to extend their period of study for up to one additional year. Students receive a certificate of completion upon successfully fulfilling the requirements below.

- Completing two semesters of study
- Earning a minimum of 28 credits with at least 14 credits earned each semester



Academic Calendar

Schedule	Spring	Fall
Dormitory Check-in	Late March	Early September
Orientation Course Registration	Early April	Mid September
Semester Begins	Mid April	Late September
Semester Ends	Late July	Late January
Final Examination	Early August	Late January
Vacation	Early August – Late September	Late December – Early January Late January – Early April

※ For more information, check here.





Non-Degree Undergraduate Course Registration



▶ Go To <https://www.aasa.ac.jp/institution/international/en/program/course/>

English Taught Courses

Courses Offered

The student will be enrolled in Faculty of Global Communication (Hoshigaoka Campus). The course list taught in English is available at:

<https://www.aasa.ac.jp/institution/international/en/program/course/english.html>

Exchange students must register and earn at least 14 credits per semester at ASU.

Application Requirements

Language requirement

Not required, but suggested for non-native English speakers to have TOEFL iBT 71/ IELTS 5.5 (CEFR B2 level) or equivalent.

Academic requirement

Failing grade (F) must be less than 10% at their home universities.

Japanese Language Class

Students are recommended to take “Introductory Japanese I & II” during their first semester at ASU.

Japanese Taught Courses

Courses Offered

The student can choose courses across all faculties and departments. To find courses, go to the ASU syllabus search website at:

<http://pnavi.aasa.ac.jp/syllabus/search/search.php>

Exchange students must register and earn at least 14 credits per semester at ASU.

Application Requirements

Language requirement

Japanese Language Proficiency Test (JLPT) N1.

Academic requirement

Failing grade (F) must be less than 10% at their home universities.

Japanese Language Class

Students are recommended to take “Japanese Academic Writing for non-native speakers.”

Accommodation

iHouse (International House)



▶ Go To <https://www.aasa.ac.jp/institution/ihouse/en/>

iHouse was built on Nagakute campus in 2013. Its second and third floors are the dormitory for international students. A live-in dormitory manager is on duty for 24 hours, and its entrance is separated from the rest of the facilities completely for security by a door which can be opened only with the resident's ID card. All rooms are single.



Basic Room Facilities

Single bed frame and mattress, desk and chair, desk lamp, refrigerator, air conditioner, closet, curtains, internet (Ethernet connection)



Common Facilities

Kitchen, living and dining room, study room, mini lounges, shower rooms, toilets, laundry room, vending machine



RA (Resident Assistant)

RAs are live-in students at iHouse to support a positive on-campus living experience for the international students. They provide a practical advice for students who need help dealing with social, medical, and personal problems. They assist international students in their adjustment to a new environment and community. They also host various events to interact with international students living in iHouse.

Partner Institutions

Aichi Shukutoku University has international exchange agreements with partner universities in 23 countries and regions.



USA

- Mississippi University for Women
- West Virginia University
- Southern New Hampshire University
- The University of Tennessee at Martin
- University of North Carolina Wilmington
- California State University San Marcos
- Ferris State University
- Arkansas State University
- The University of Mississippi



Canada

- Medicine Hat College
- University of the Fraser Valley



Mexico

- Universidad Internacional



UK

- Oxford Brookes University
- Birmingham City University
- York St John University



Ireland

- National University of Ireland, Galway



Belgium

- IHECS
- VIVES University of Applied Sciences



France

- EDH (EFAP School of Communication)



Germany

- University of Hamburg
- Stuttgart Media University
- Baden-Wuerttemberg Cooperative State University (DHBW)
- University of Vechta
- Neu-Ulm University of Applied Sciences



Austria

- University of Graz
- FH Wien der WKW University of Applied Sciences for Management & Communication



Hungary

- University of Dunaújváros



Latvia

- Ventspils University College



Poland

- State Higher Vocational School in Tarnow
- Wszelchnica Polska University in Warsaw



Czech

- Palacký University Olomouc
- University of Ostrava



Italia

- University of Siena



Spain

- The University of Córdoba
- University of Málaga
- The University of Jaén



Denmark

- Zealand Institute of Business and Technology (ZIBAT)



Sweden

- Stockholm University



Finland

- Metropolia University of Applied Sciences



China

- Nanjing Normal University
- Beijing Normal University
- Tianjin Foreign Studies University
- Beijing Language and Culture University



Taiwan

- Wenzao Ursuline University of Languages
- Providence University
- Tainan University of Technology



Republic of Korea

- Chung-Ang University
- Ewha Womans University
- Kookmin University
- Dong-A University
- Mokpo National University
- Daegu Catholic University



Hong Kong

- The Hang Seng University of Hong Kong



Australia

- CQ University
- University of Canberra
- Western Sydney University

As of December 1, 2019

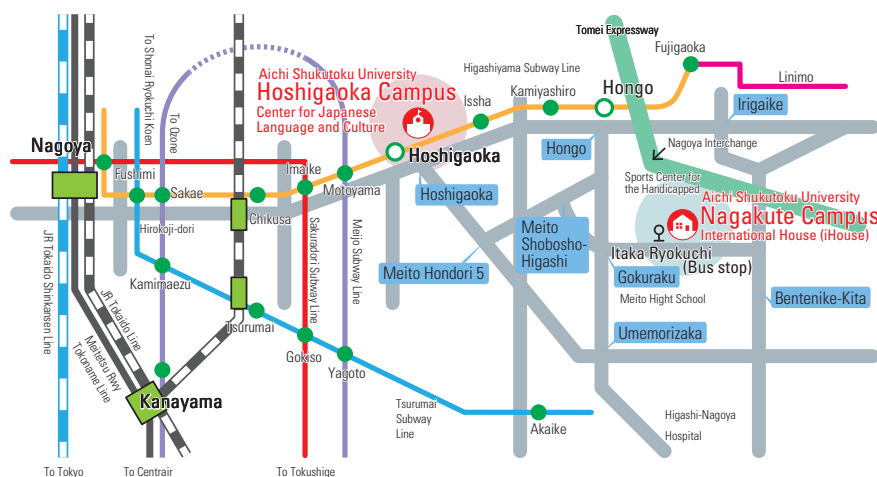
Buddy Program

Exchange students are supported by their fellow buddies. International students and these volunteer students can help each other in your respective native language and share many amazing experiences together. ASU students will make you feel at home.



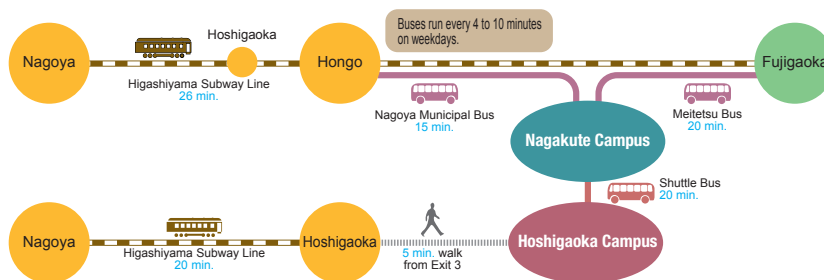
Access to Aichi Shukutoku University

Aichi Shukutoku University has two campuses: the Nagakute Campus and the Hoshigaoka Campus. Students can use the shuttle bus between the campuses free of charge.



HOSHIGAOKA Campus
 23, Sakuragaoka, Chikusa-ku, Nagoya, Aichi 464-8671, JAPAN
 TEL: +81-(0)52-781-1151

NAGAKUTE Campus
 9, Katahira 2-chome, Nagakute, Aichi 480-1197, JAPAN
 TEL: +81-(0)561-62-4111



HOSHIGAOKA Campus
 20 minutes from Nagoya Station to Hoshigaoka Station on the Higashiyama Subway Line. A 3-minute walk from the No. 3 exit.

NAGAKUTE Campus International House (iHouse)
 26 minutes from Nagoya Station to Hongo Station on the Higashiyama Subway Line. Take a city bus from Hongo Station to Itaka Ryokuchi which is the last stop. Itaka Ryokuchi Stop is right in front of ASU. It takes about 15 minutes.

Aichi Shukutoku University Center for International Programs

23 Sakuragaoka, Chikusa-ku, Nagoya, Aichi 464-8671 JAPAN

TEL: +81-(0)52-783-1590

FAX: +81-(0)52-783-1578

E-mail: kokusai@asu.aasa.ac.jp

<https://www.aasa.ac.jp/institution/international/>

